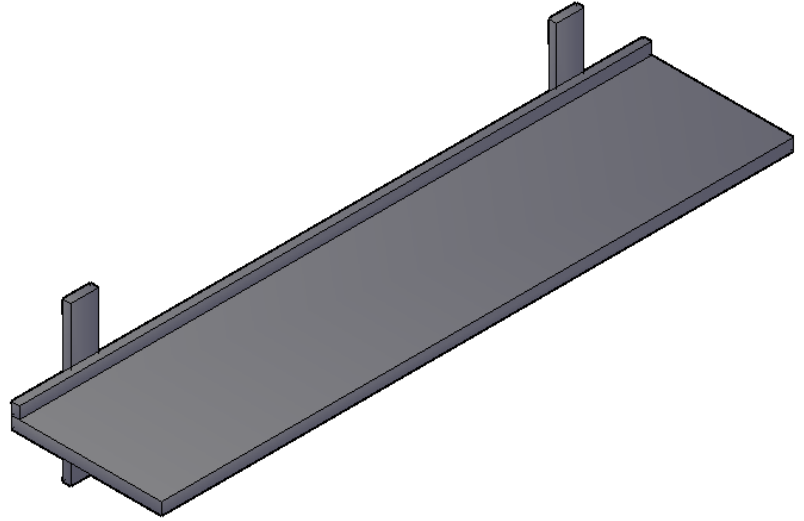


Product Summary


Range of Models composed of wall shelf varying in length from 1000 to 2000 mm with bracket support for durability and strength.





SOLID WALL SHELF


1000/2000mm


Technical Custom Fabrication Product Description

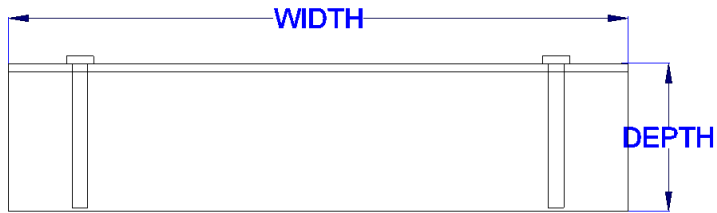
 The wide range of modular wall shelves is ideally suited to solve every storage need and rationally use the available space in the kitchen.

 All elements made entirely in 304 AISI stainless steel, 10/10 in thickness with a Scotch Brite finish.

 The wall shelves are easily installed and positioned at different heights on the wall using the wall brackets supplied. Wall shelves up to a length of 1600 mm are supplied with 2 wall brackets, wall shelves 1800 mm and 2000 mm in length are supplied with 3 wall brackets.

 All the wall shelves incorporate a rear upstand to facilitate easy cleaning, avoiding spillage between the wall and the shelf.

 All panel edges are upturned to guarantee the safety of the kitchen worker.



TECHNICAL DATA

WIDTH	DEPTH	HEIGHT	REMARKS
1000-2000	400	40	Depends how many shelf required

All measurements are in mm



The Technical Company

P.O. Box 5090 Safat, 13051 Kuwait -Tel: +965-1800771 Fax: +965-24848310

E-mail: info@alqudaibi.com – Website: www.alqudaibi.com

A Subsidiary of QDB Holding

